



# Staff & HQ Report

Feb 2026

v3

**STANDARDS**

CONNECT - COLLABORATE. - INNOVATE. - GROW. - PROSPER

# SEMI Global 2026 Calendar of Events

Event Name	Event Details
<b>SEMICON<sup>®</sup></b> <b>KOREA</b>	Feb 11-13 Seoul, Korea
<b>SEMICON<sup>®</sup></b> <b>CHINA</b>	March 25-27 Shanghai, China
<b>SEMIEXPO HEARTLAND</b>	April 29-30 Detroit, Michigan
<b>SEMICON<sup>®</sup></b> <b>SOUTHEAST</b> <b>ASIA</b>	May 05-07 Kuala Lumpur, Malaysia
<b>SEMICON<sup>®</sup></b> <b>TAIWAN</b>	Sept 2-4 Taipei
<b>SEMICON<sup>®</sup></b> <b>INDIA</b>	Sept 17-19 New Delhi

# SEMICON West 2026-2030

- 2026—October 13-15 | Moscone Center | San Francisco, CA
- **2027—October 12-14 | Phoenix Convention Center | Phoenix, AZ**
- 2028—October 10-12 | Moscone Center | San Francisco, CA
- **2029—October 9-11 | Phoenix Convention Center | Phoenix, AZ**
- 2030—October 29-31 | Moscone Center | San Francisco, CA

# Upcoming NA Meetings 2026

Event Name	Date/Venue
NA Winter Meeting	Feb 09-12 (Full Virtual)
NA Spring Meeting <i>(In conjunction with ASMC)</i>	May 11-14 Hilton Albany, New York
SEMICON West Meeting	October 12-15 San Francisco, California/USA

# ASMC Meeting Registration & Sponsorship

- Registration
  - Standards Meetings Registration
    - [https://bit.ly/Standards\\_ASMC\\_2026](https://bit.ly/Standards_ASMC_2026)
  - Hotel Reservation
    - Hotel Link: <https://www.hilton.com/en/attend-my-event/asmc-conference-may-2026/>
    - Call 1(800) Hiltons reservation line and provide the code **“4ASMC”**
    - Deadline: Tuesday, April 21
- Sponsorship needed
  - Event Logistic (e.g., Catering, Coffee breaks, AV)
  - Please contact staff for more info.

# SEMI Advanced Semiconductor Manufacturing Conference (ASMC)



- About ASMC
  - SEMI's international technical conference for discussing solutions that improve the collective manufacturing expertise of the semiconductor industry.
  - Provides a platform for semiconductor professionals to network and learn the latest in the practical application of advanced manufacturing strategies and methodologies.
- ASMC 2026: May 11-14 | Hilton Albany | Albany, NY
- Technical Sessions:
 

<ul style="list-style-type: none"> <li>➤ Advanced Equipment Processes and Materials</li> <li>➤ Advanced Metrology</li> <li>➤ Advanced Patterning</li> <li>➤ Advanced Process Control</li> <li>➤ Big Data Management and Machine Learning</li> <li>➤ Contamination Free Manufacturing</li> </ul>	<ul style="list-style-type: none"> <li>➤ Defect Inspection and Reduction</li> <li>➤ Equipment Optimization</li> <li>➤ Factory Optimization</li> <li>➤ Smart Manufacturing</li> <li>➤ Wafer Level Packaging &amp; Novel Devices</li> <li>➤ Yield Enhancement / Yield Methodologies</li> </ul>
---	--



# SEMI Advanced Semiconductor Manufacturing Conference (ASMC)

- View 2025 Agenda:



**semi** **ASMC** ADVANCED SEMICONDUCTOR MANUFACTURING CONFERENCE  
MAY 5-8, 2025 | HILTON ALBANY, ALBANY, NY

**WELCOME RECEPTION**  
Monday, May 5  
6:00-7:00pm  
**axcelis**

**POSTER SESSION/RECEPTION**  
Tuesday, May 6  
5:30-7:30pm  
**semi**

**WI-FI ACCESS**  
Sponsored by  
**Rigaku**  
WI-FI CONNECTION: H1HONORS or atwifi  
PASSWORD: asmcRIGAKU

**ASMC MOBILE APP ACCESS**  
**KLA**  
Registered email required  
No log-in  
Proceedings available here  
at the end of the conference  
[www.semiamericas.org/asmc25-mobile-app](http://www.semiamericas.org/asmc25-mobile-app)

**THANK YOU TO OUR SPONSORS**

**ASNA** **axcelis** **CAMECA** **AMETEK** **DUPONT** **ERM** **GlobalFoundries** **HUNTSMAN** **IBM** **INFICON** **KLA** **Lam RESEARCH** **NEW YORK CREATES** **NOVA** **Rigaku** **SCREEN** **Seeq** **SilcoTek** **TRELLBORG**

**ADVANCED SEMICONDUCTOR MANUFACTURING CONFERENCE (ASMC)**  
**MONDAY, MAY 5**  
8:30am-5:30pm **SEMI UNIVERSITY (SEMI U) WORKSHOP**  
4:00-7:00pm **REGISTRATION**  
6:00-7:00pm **WELCOME RECEPTION** Sponsored by **axcelis**

**TUESDAY, MAY 6**  
7:00am **REGISTRATION & BREAKFAST**  
8:00 **WELCOME TO ASMC 2025** Joe Stockman, President, SEMI Americas  
**OPENING REMARKS** Co-Chairs: Katie Luttrell-Lee, TTCA; Semra Bagheri, EMD Electronics  
**SPECIAL PRESENTATION**  
**PRESENTATION OF THE ASMC 2024 BEST PAPER & BEST STUDENT PAPER AWARDS**  
8:45 **OPENING KEYNOTE**  
**POWERING AI: RISING TO THE CHALLENGE**  
Panel: Freundlich, Vice President and Chief Technology Officer, onsemi  
9:30 **COFFEE BREAK** Sponsored by **INFICON**

**#SEMI\_ASMC** **www.semi.org/asmc**

**semi** **ASMC** ADVANCED SEMICONDUCTOR MANUFACTURING CONFERENCE  
MAY 5-8, 2025 | HILTON ALBANY, ALBANY, NY

**WELCOME RECEPTION**  
Monday, May 5  
6:00-7:00pm  
**axcelis**

**POSTER SESSION/RECEPTION**  
Tuesday, May 6  
5:30-7:30pm  
**semi**

**WI-FI ACCESS**  
Sponsored by  
**Rigaku**  
WI-FI CONNECTION: H1HONORS or atwifi  
PASSWORD: asmcRIGAKU

**ASMC MOBILE APP ACCESS**  
**KLA**  
Registered email required  
No log-in  
Proceedings available here  
at the end of the conference  
[www.semiamericas.org/asmc25-mobile-app](http://www.semiamericas.org/asmc25-mobile-app)

**THANK YOU TO OUR SPONSORS**

**ASNA** **axcelis** **CAMECA** **AMETEK** **DUPONT** **ERM** **GlobalFoundries** **HUNTSMAN** **IBM** **INFICON** **KLA** **Lam RESEARCH** **NEW YORK CREATES** **NOVA** **Rigaku** **SCREEN** **Seeq** **SilcoTek** **TRELLBORG**

**ADVANCED SEMICONDUCTOR MANUFACTURING CONFERENCE (ASMC)**  
**MONDAY, MAY 5**  
8:30am-5:30pm **SEMI UNIVERSITY (SEMI U) WORKSHOP**  
4:00-7:00pm **REGISTRATION**  
6:00-7:00pm **WELCOME RECEPTION** Sponsored by **axcelis**

**TUESDAY, MAY 6**  
7:00am **REGISTRATION & BREAKFAST**  
8:00 **WELCOME TO ASMC 2025** Joe Stockman, President, SEMI Americas  
**OPENING REMARKS** Co-Chairs: Katie Luttrell-Lee, TTCA; Semra Bagheri, EMD Electronics  
**SPECIAL PRESENTATION**  
**PRESENTATION OF THE ASMC 2024 BEST PAPER & BEST STUDENT PAPER AWARDS**  
8:45 **OPENING KEYNOTE**  
**POWERING AI: RISING TO THE CHALLENGE**  
Panel: Freundlich, Vice President and Chief Technology Officer, onsemi  
9:30 **COFFEE BREAK** Sponsored by **INFICON**

**#SEMI\_ASMC** **www.semi.org/asmc**

**ADVANCED SEMICONDUCTOR MANUFACTURING CONFERENCE (ASMC)**  
**WEDNESDAY, MAY 7**  
7:00-8:00am **REGISTRATION & BREAKFAST**  
8:00 **WELCOME TO ASMC 2025** Joe Stockman, President, SEMI Americas  
**OPENING REMARKS** Co-Chairs: Katie Luttrell-Lee, TTCA; Semra Bagheri, EMD Electronics  
**SPECIAL PRESENTATION**  
**PRESENTATION OF THE ASMC 2024 BEST PAPER & BEST STUDENT PAPER AWARDS**  
8:45 **OPENING KEYNOTE**  
**POWERING AI: RISING TO THE CHALLENGE**  
Panel: Freundlich, Vice President and Chief Technology Officer, onsemi  
9:30 **COFFEE BREAK** Sponsored by **INFICON**

**THURSDAY, MAY 8**  
7:00am **REGISTRATION & BREAKFAST**  
8:00 **WELCOME TO ASMC 2025** Joe Stockman, President, SEMI Americas  
**OPENING REMARKS** Co-Chairs: Katie Luttrell-Lee, TTCA; Semra Bagheri, EMD Electronics  
**SPECIAL PRESENTATION**  
**PRESENTATION OF THE ASMC 2024 BEST PAPER & BEST STUDENT PAPER AWARDS**  
8:45 **OPENING KEYNOTE**  
**POWERING AI: RISING TO THE CHALLENGE**  
Panel: Freundlich, Vice President and Chief Technology Officer, onsemi  
9:30 **COFFEE BREAK** Sponsored by **INFICON**

**#SEMI\_ASMC** **www.semi.org/asmc**



## 2025 SEMI Standards Meetings & Events

<b>Date</b>	Dec 17 - 19, 2025 (49 <sup>th</sup> since 1977)
<b>Venue</b>	East Hall 4-6, West Hall, South Hall, Conference Tower, Tokyo Big Sight
<b>Organizer</b>	SEMI
<b>Event theme</b>	AI x Sustainability x Semiconductor

<b>Results</b>	(2024 results)	
- Exhibitors	1,216	(1,107)
- Booths	2,900	(2,789)
- Exhibit Area (sqm)	24,735	(24,093)
- Country/Region	35	(35)
- Cumulative Attendance	121,267	(103,165)
- Verified Visitors	55,380	(45,698)

- SEMI Standards hosted the below Technical Committees + many Task Forces:

Compound Semiconductor Materials/ Information & Control/ Metrics/  
Physical Interfaces & Carriers/ Silicon Wafer/ Traceability

- Technology Sessions Related to Standardization were held including:

### Cybersecurity Forum

Wednesday, December 17 | 9:30 - 11:00  
605-606, Conference Tower, Tokyo Big Sight

### SATAS Program Summit

**Transformation of The Semiconductor Back-End Process!**  
**The World of Fully Automated Back-End Processing that SATAS Aims For**

Wednesday, December 17 | 13:30 - 15:00  
605-606, Conference Tower, Tokyo Big Sight

### Smart Manufacturing: The Next Frontier

**Smarter Factory for Solving Semiconductor Fab Operation Challenges**

Friday, December 19 | 09:30 - 11:00  
102, Conference Tower, Tokyo Big Sight



# Critical Dates for SEMI Standards Ballots 2026

2026	Ballot Submission Deadline	Voting Opens	Voting Closes
Cycle 2	January 23	February 11	March 13
Cycle 3	March 5	March 18	April 17
Cycle 4	March 16	March 25	April 24
Cycle 5	May 22	June 2	July 2
Cycle 6	June 19	July 8	August 7
Cycle 7	July 31	August 19	September 18
Cycle 8	September 3	September 23	October 23
Cycle 9	October 1	October 21	November 20

# SEMI Standards Publications

- Total SEMI Standards in portfolio: 1,108
  - Includes 374 Inactive Standards

Cycle	New	Revised	Reapproved	Withdrawn
October 2025	0	2	3	0
November 2025	1	7	5	0
December 2025	0	9	0	0

# SEMI Standards Publications

## 14 New SEMI Standards Published in 2025

- SEMI E192 – Guide for Equipment Adoption Criteria for GEM and GEM-related Standards
- SEMI D87 – Test Method for Response Time Evaluation of Displays with Variable Refresh Rate
- SEMI PV102 – Guide for Tube PECVD Graphite Boat Materials for Solar Cell Production
- SEMI F122 – Guide for Facilities Data Package for Manufacturing Equipment Installation and Building Information Modeling
- SEMI D88 – Specification for Electrostatic Properties of FPD Photomasks and Blanks Package
- SEMI MS15 – Guide to MEMS Manufacturing Readiness Levels
- SEMI E193 – Specification for 300 mm Film Frame FOUP (FFF)
- SEMI M94 – Specification for Silicon Carbide Engineered Substrates
- SEMI E194 – Guide to Using a Liquid Particle Counter to Assess Particulate Surface Contamination on Critical Chamber Components and Coupons
- SEMI E195 – Test Method Using Adhesive Replacement Substrates to Assess Particulate Surface Contamination on Critical Chamber Components
- SEMI E196 – Guide for Equipment Edge Data Governance
- SEMI M95 – Test Method for Net Carrier Density and Resistivity of Silicon Epitaxial Layer by Capacitance–Voltage Measurements with an Evaporated Metal Schottky Diode
- SEMI T26 – Specification for Electronic Supply Chain Traceability Using Distributed Ledger Technology
- SEMI T27 – Specification for Traceability Identification Label of Component Parts

# Regulations & Procedure Manual

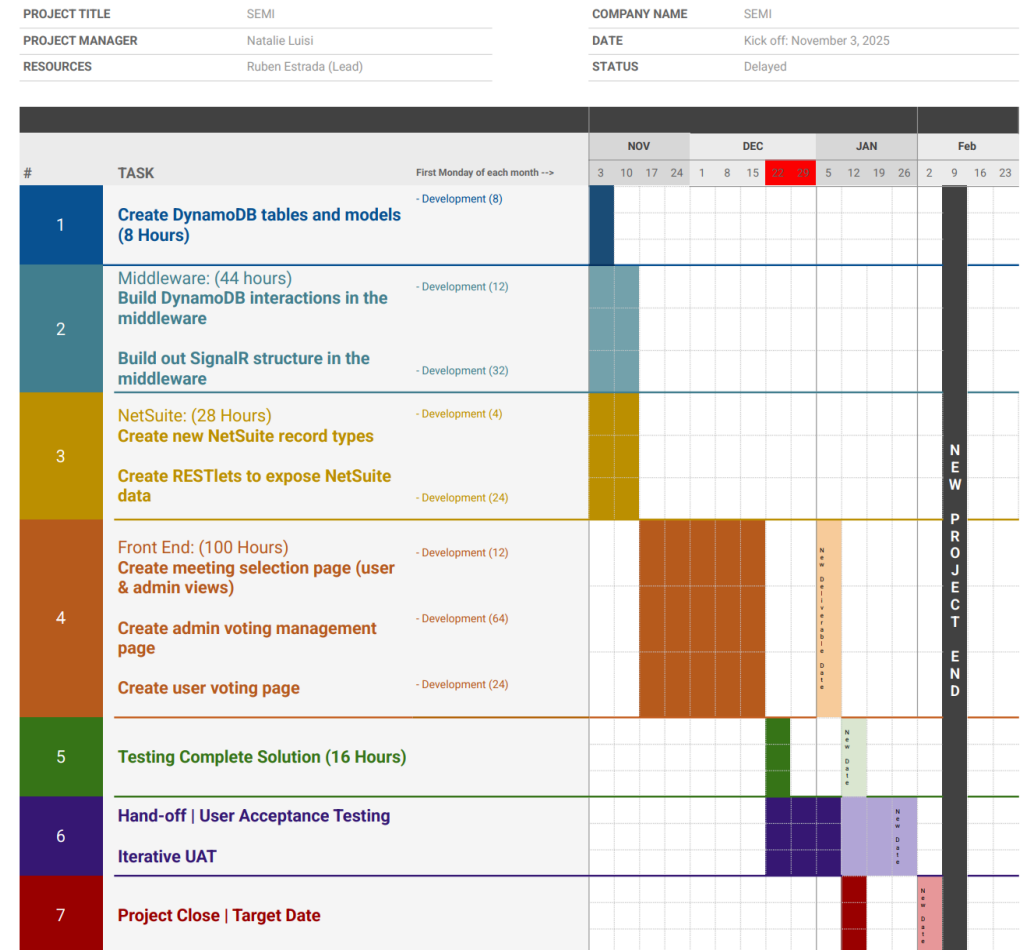
Available at [www.semi.org/standards](http://www.semi.org/standards) (under Tools for Developing Standards) or direct link below

- Regulations (Feb 20, 2024)
  - <https://www.semi.org/sites/semi.org/files/2024-02/Standards%20Regulations%20February%2020%202024.pdf>
- Procedure Manual (July 7, 2025)
  - <https://www.semi.org/sites/semi.org/files/2025-07/Procedure%20Manual%20July%2007%2C%202025%20v1.pdf>

# SEMI IT - China SVM Issue

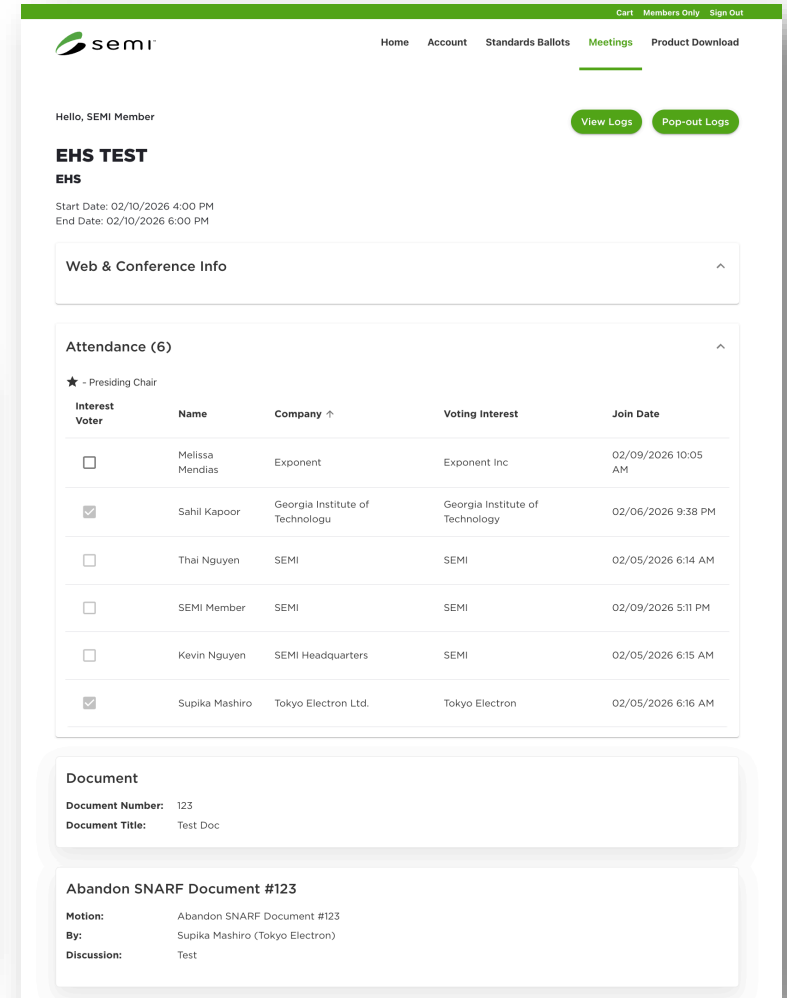
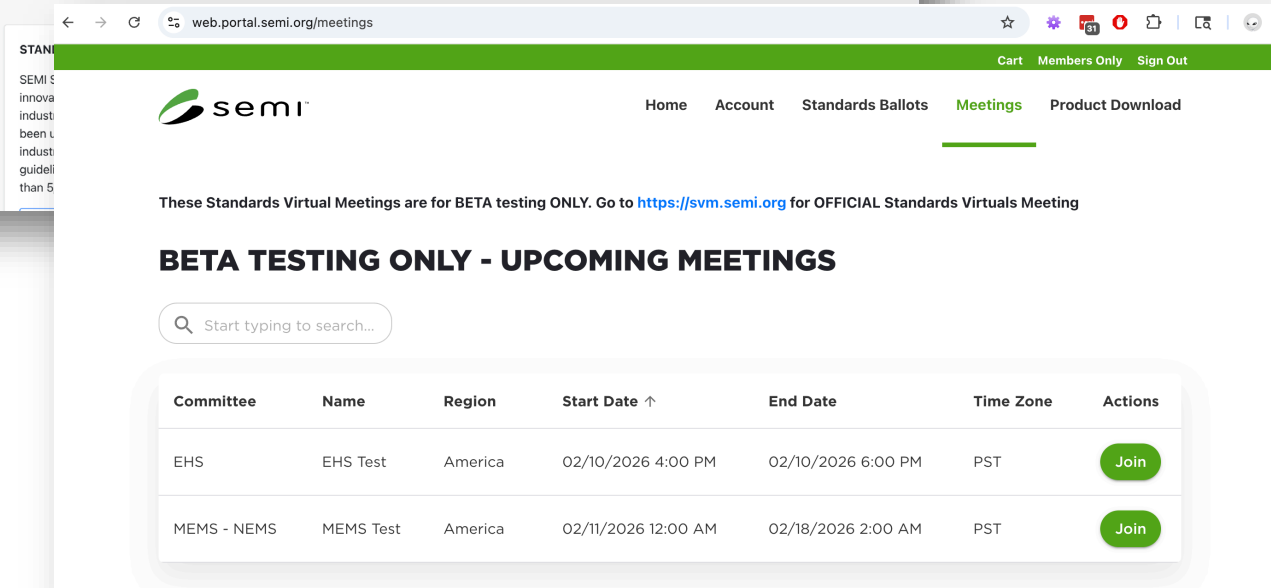
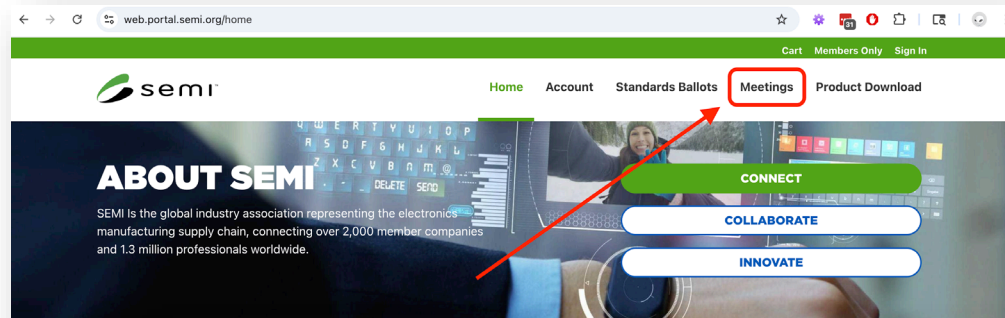
- Acquired Consultant to Rebuild SVM on Ballot Platform November 2025
- Thai leading development team
- HQ Kevin, Laura, Michelle and China Standards Staff supporting
- User Testing – January 2026
- Beta Launch Target – February 2026
- Feedback and Performance Refinement – February to March 2026

## SEMI PROJECT TIMELINE



# BETA – Standards Virtual Meeting App

<https://web.portal.semi.org/meetings> - Familiar with improvements



# Educational Courses under Development

- {Subfab} ***Intro to Sub-fab Course***
  - Objective: Gain a comprehensive understanding of SubFAB operations, including system components, facility layouts, environmental and sustainability considerations, organizational structure, safety and maintenance best practices, and incident-response preparedness within the semiconductor manufacturing ecosystem.
  - Course Date: Early 2026 (2 sessions, EU & Asia friendly)
  - Status: Under development
- Other courses being considered: SECS/GEM, Seals, Cybersecurity

Interested in shaping future educational courses with us? Please reach out to SEMI staff.

# Introducing the SEMI University Learning Platform

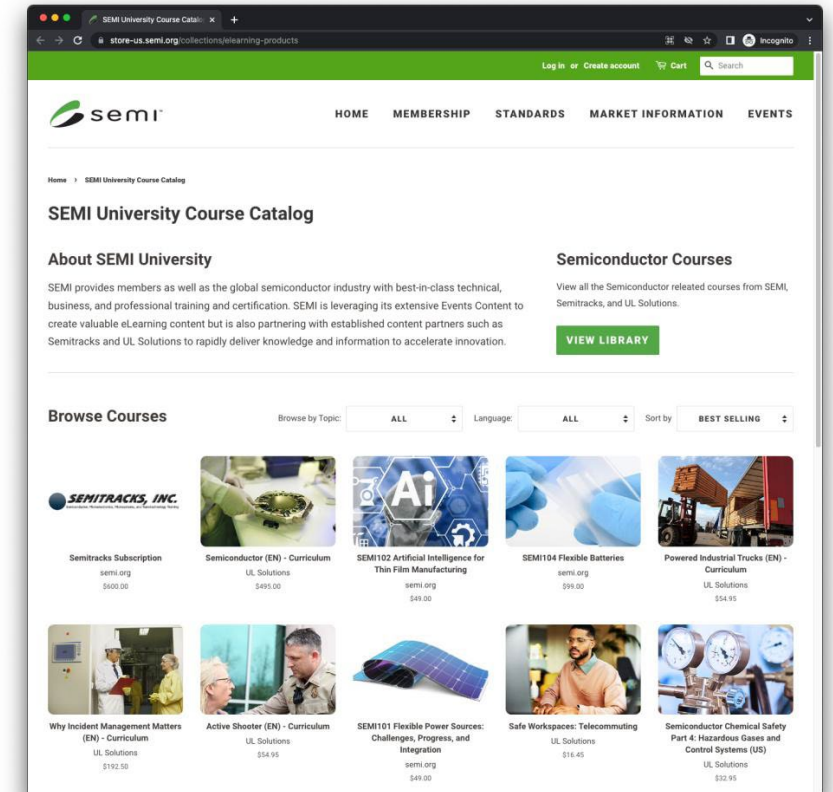
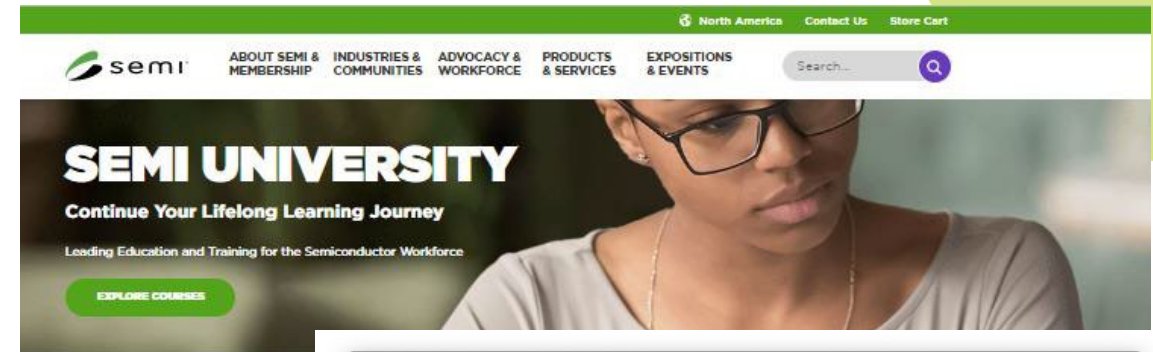


## SEMI University is designed for the semiconductor industry by experts

- Targeted to employees ranging from new operators to experienced technicians to non-technical staff
- Semiconductor content, business content and other skills

## 250+ on-demand courses designed specifically for our industry. Categories include:

- Introduction to Semiconductors
- Advanced Technologies
- AI & Data Techniques
- Safety
- Principles of Design
- Front-end / Back-end Processing
- Test and Characterization
- Robotics



# SEMI University

- 250+ online courses
- 7000+ user enrollments from 58 countries
- Employees from 1100+ companies have enrolled in courses



The Canon logo, consisting of the word "Canon" in a bold, red, sans-serif font.

The IBM logo, featuring the word "IBM" in a bold, black, sans-serif font with horizontal stripes.

The Sony logo, consisting of the word "SONY" in a bold, blue, sans-serif font.

The KLA+ logo, featuring the letters "KLA" in a purple, sans-serif font followed by a blue square containing a white plus sign, with the tagline "Keep Looking Ahead" in small text below.

The TEL logo, consisting of the letters "TEL" in a bold, blue, sans-serif font.

The Microsoft logo, featuring the four-colored square (red, green, blue, yellow) followed by the word "Microsoft" in a grey, sans-serif font.



The Amazon logo, featuring the word "amazon" in a black, sans-serif font with a curved orange arrow underneath.

The Micron logo, consisting of the word "Micron" in a blue, sans-serif font with a stylized blue orbital ring around the letter "i".

The EMD Electronics logo, featuring the letters "EMD" in a bold, blue, sans-serif font above the word "Electronics" in a lighter blue, sans-serif font.

The Pfeiffer Vacuum logo, featuring the word "PFEIFFER" in a red, sans-serif font followed by a stylized grey fan-like graphic and the word "VACUUM" in a grey, sans-serif font.

The Intel logo, consisting of the word "intel" in a bold, black, sans-serif font with a registered trademark symbol.

The Lam Research logo, featuring a stylized black triangle graphic to the left of the word "Lam" in a black, sans-serif font, with "RESEARCH" in a smaller, black, sans-serif font below it.

The Google logo, consisting of the word "Google" in its multi-colored, sans-serif font.

The Dupont logo, featuring the word "DUPONT" in a bold, red, sans-serif font with a stylized red graphic element.

The Cisco logo, featuring a stylized blue graphic of vertical lines of varying heights to the left of the word "cisco" in a blue, sans-serif font.

The ThermoFisher Scientific logo, featuring the words "ThermoFisher" in a red, sans-serif font above the word "SCIENTIFIC" in a black, sans-serif font.

The Infineon logo, consisting of the word "Infineon" in a blue, sans-serif font with a red swoosh graphic underneath.

The VAT logo, featuring the letters "VAT" in a bold, green, sans-serif font with the tagline "PASSION. PRECISION. PURITY." in small text below.

The Unimicron logo, consisting of the word "Unimicron" in a bold, blue, sans-serif font.



The JX Nippon Mining &amp; Metals logo, featuring the text "JX Nippon Mining &amp; Metals" in a black, sans-serif font.



**Discount code: SEMIU10**

(Applicable to On Demand online courses only!  
Not applicable to Virtual or in-person Trainings)

If you have any questions,  
please reach out to **Naresh Naik**  
[nnaik@semi.org](mailto:nnaik@semi.org)

**Start your SEMI University journey today!**

# SEMI JAPAN Original Courses



More courses to come!

## Semiconductor Manufacturing Process – Front-End



## Semiconductor Manufacturing Process – Back-end



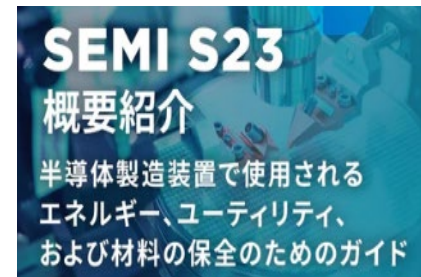
## Various Semiconductors



## Regulatory



## SEMI Standards



Check more details at:

<https://store-jp.semi.org/collections/semi-university>



**THANK YOU**

**STANDARDS**